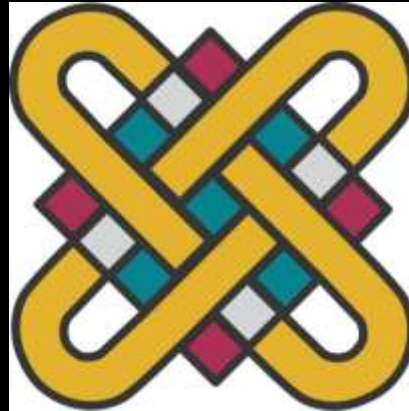


ΠΑΝΕΠΙΣΤΗΜΙΟ ΔΥΤΙΚΗΣ ΜΑΚΕΔΟΝΙΑΣ
ΤΜΗΜΑ ΕΙΚΑΣΤΙΚΩΝ ΚΑΙ
ΕΦΑΡΜΟΣΜΕΝΩΝ ΤΕΧΝΩΝ



1^ο Εργαστήριο Ζωγραφικής

Γιάννης Ζιώγας
Επίκουρος Καθηγητής

©Γιάννης Ζιώγας

**Η πορεία από την
πραγματικότητα στην
αφαίρεση**



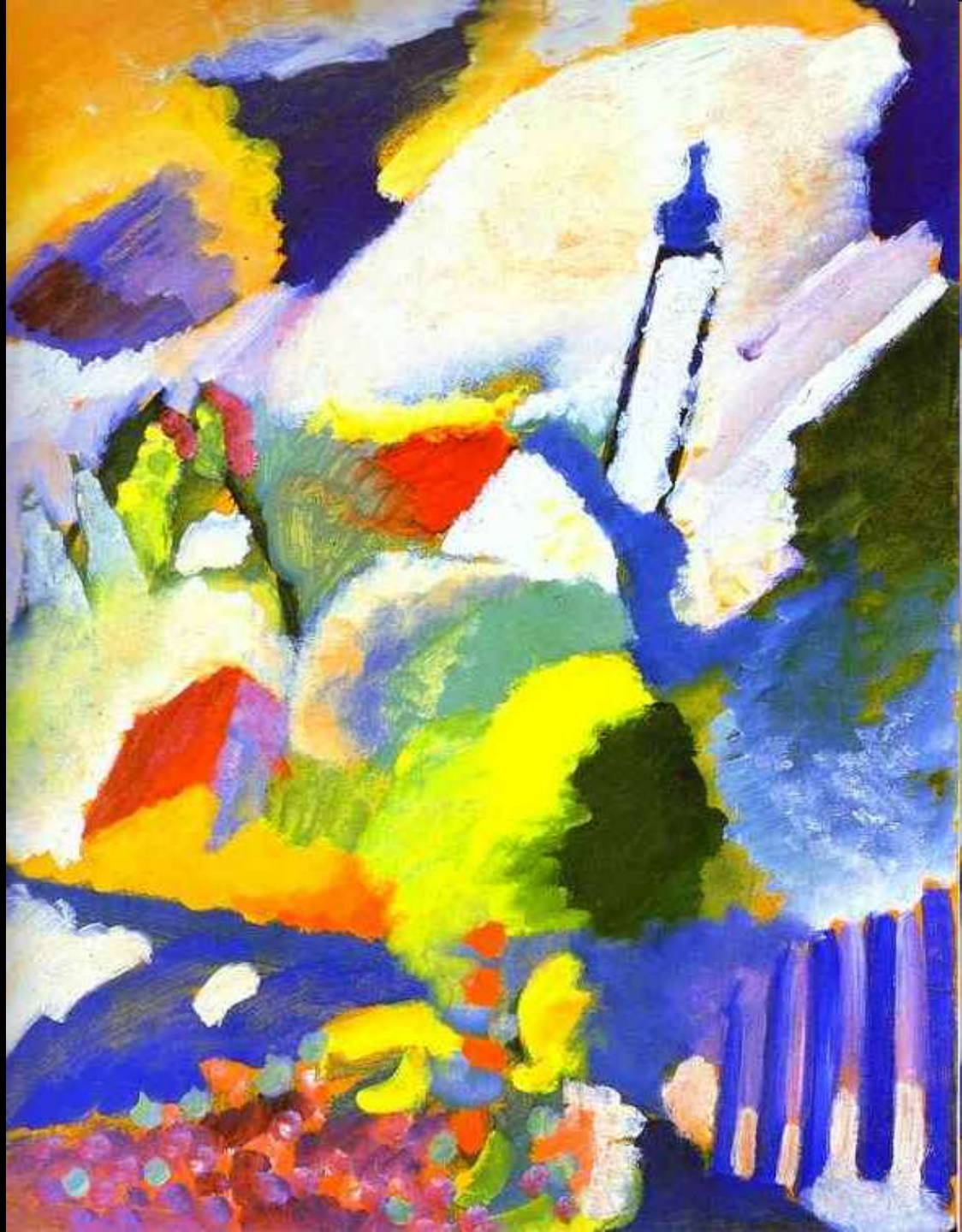
Ρεαλιστικό/αφαιρετικό/αφηρημένο





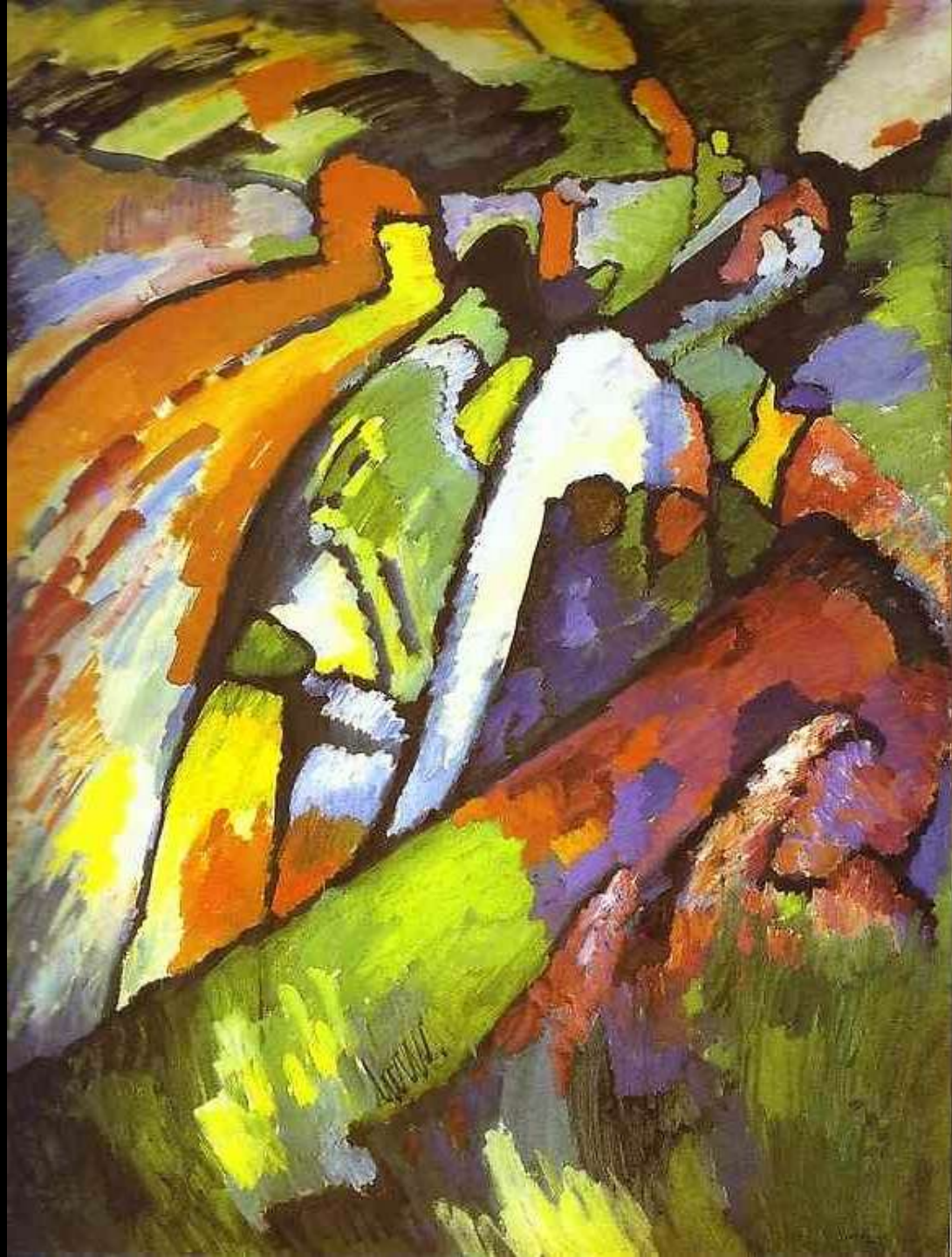
Wassily Kandinsky
*Munich-Schwabing with the
Church of St. Ursula*
68x49

(1908)





Wassily Kandinsky, *Untitled (First abstract watercolor)*, 18x20 cm, 1910



Wassily Kandinsky
Improvisation 7
1910 Oil on canvas,
131 x 97 cm;
Tretyakov Gallery,
Moscow





Hilma af Klint



Hilma af Klint

Title

SOMMARKVÄLL PÅ OLAND

Medium

Oil on Canvas

Size

34.3 x 57.9 in. / 87 x 147 cm.

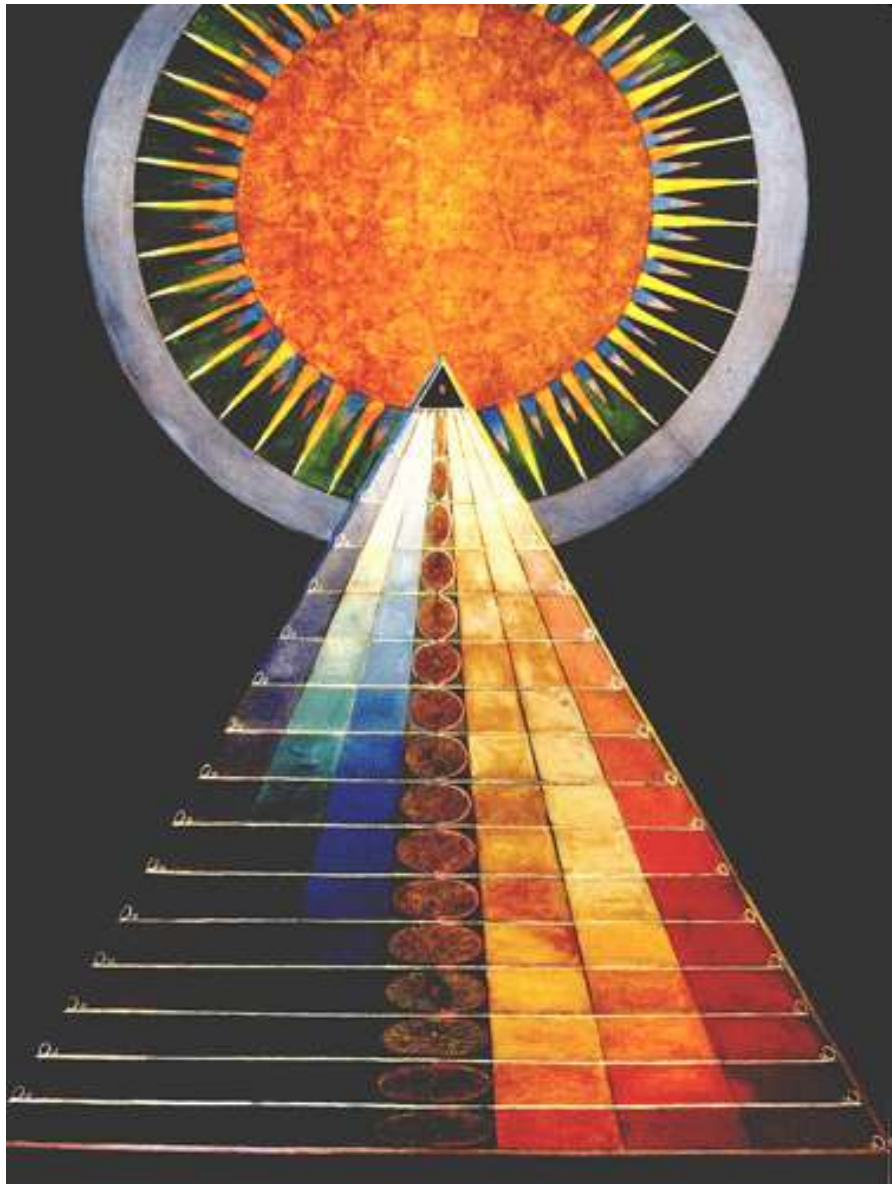
Year

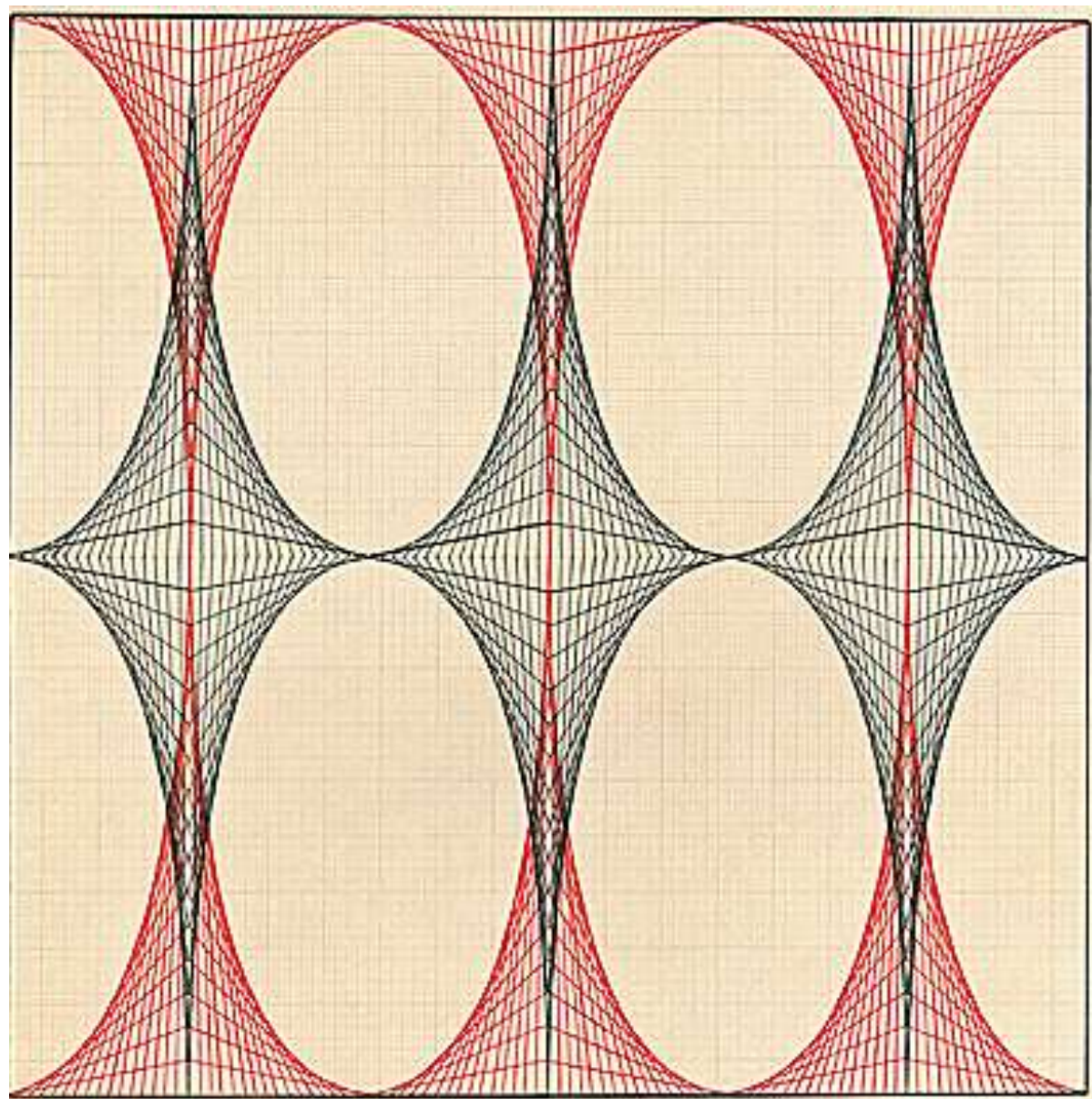
1888





Το αστέρι της Tuleitat Ghassul (3500 πΧ)









Ματίς, τα γλυπτά



The Back Series, bronze, left to right: *The Back I*, 1908–09, *The Back II*, 1913, *The Back III* 1916, *The Back IV*,























Jeannette (II)

Henri Matisse (French, 1869–1954)

Issy-les-Moulineaux, January - March (?) 1910.

Bronze, (26.2 x 21 x 24.5 cm).





Henri Matisse

(France, Cateau-Cambresis, 1869 - 1954)

Jeannette IV, 1910-1913

Sculpture, Bronze, (60.96 x 27.94 x 27.94 cm)



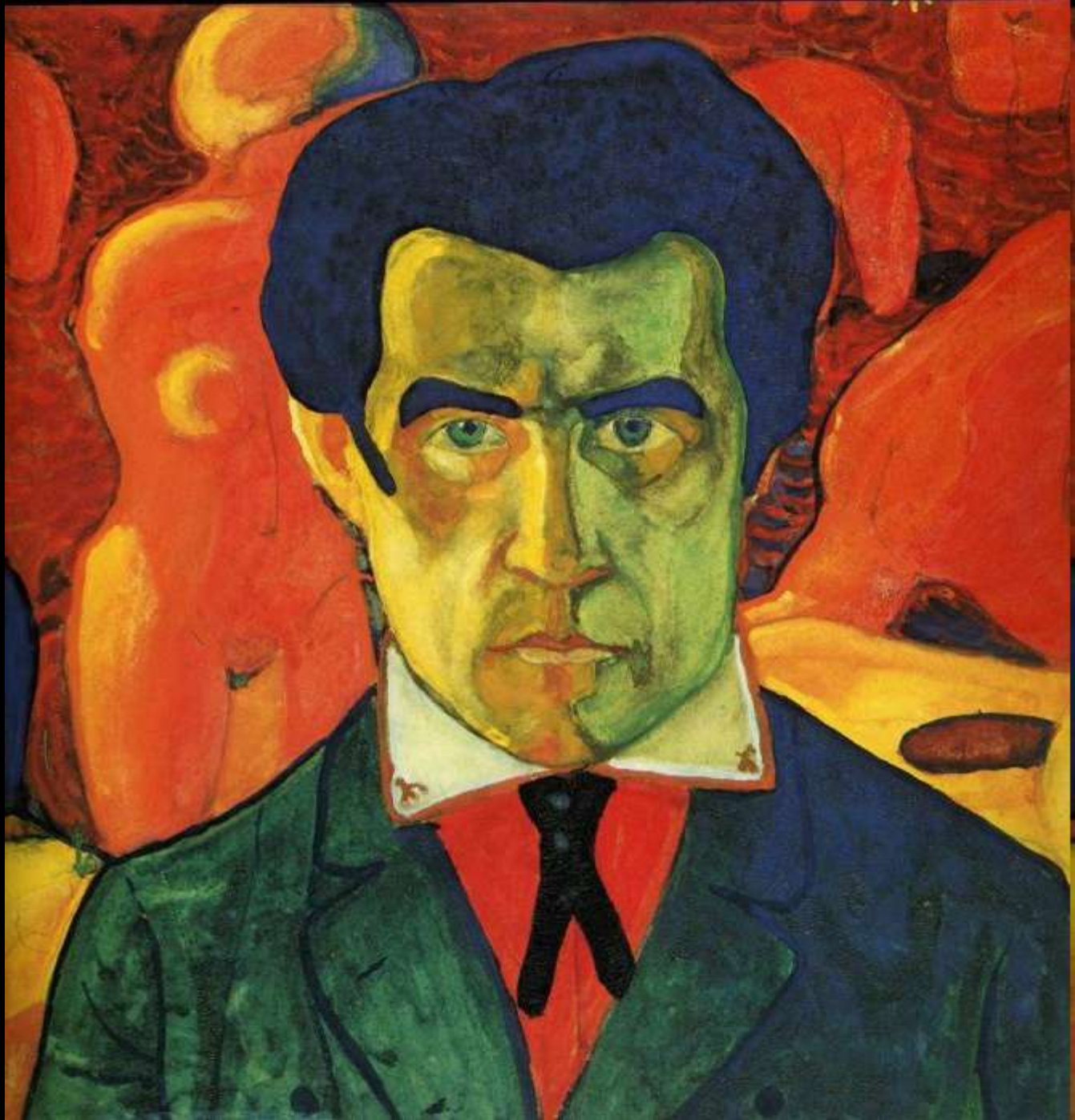
Jeannette (V)

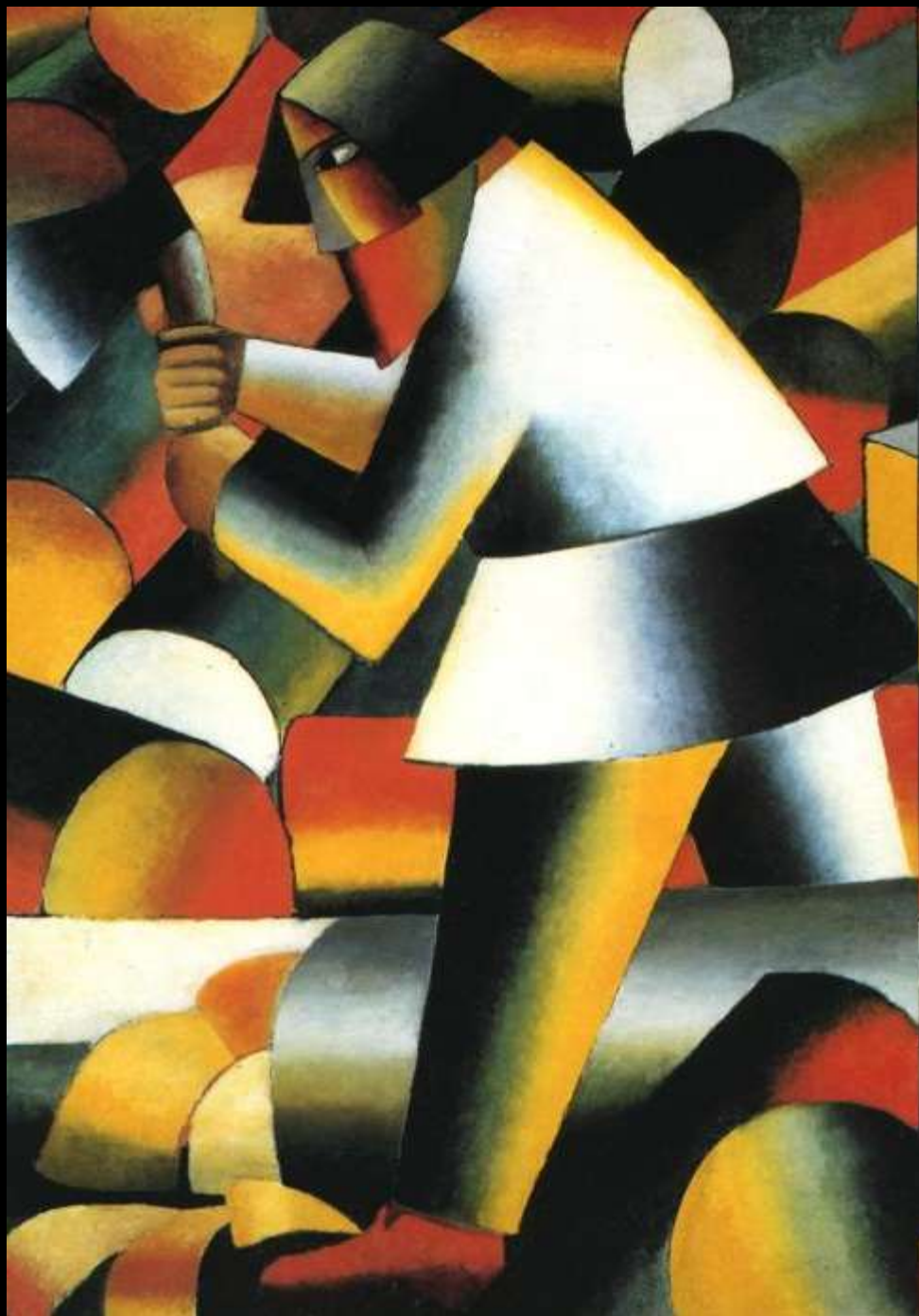
Henri Matisse (French, 1869–1954)

Issy-les-Moulineaux, summer 1916.

Bronze, 22 7/8 x 8 3/8 x 10 5/8" (58.1 x 21.3 x 27.1 cm).

Μάλεβιτς











ΖΑΚΤΗΖΗΘΕ

ΒΑΤΜΕ ΗΙΕ



ΠΡΟΚΑΛΥΨΗ ΚΑΡΤΙΝΑ

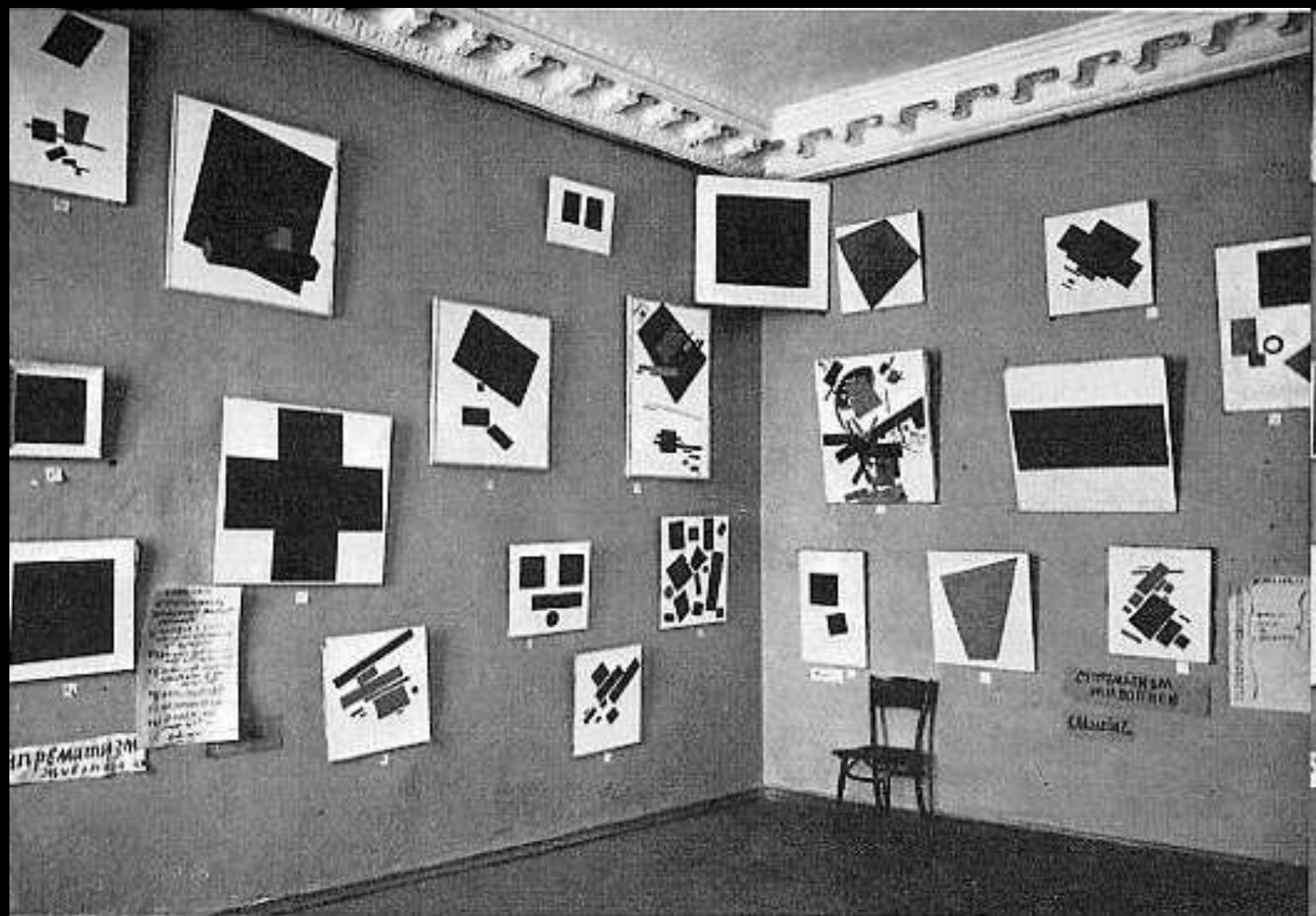


αυτονομία

Μαυβουρ

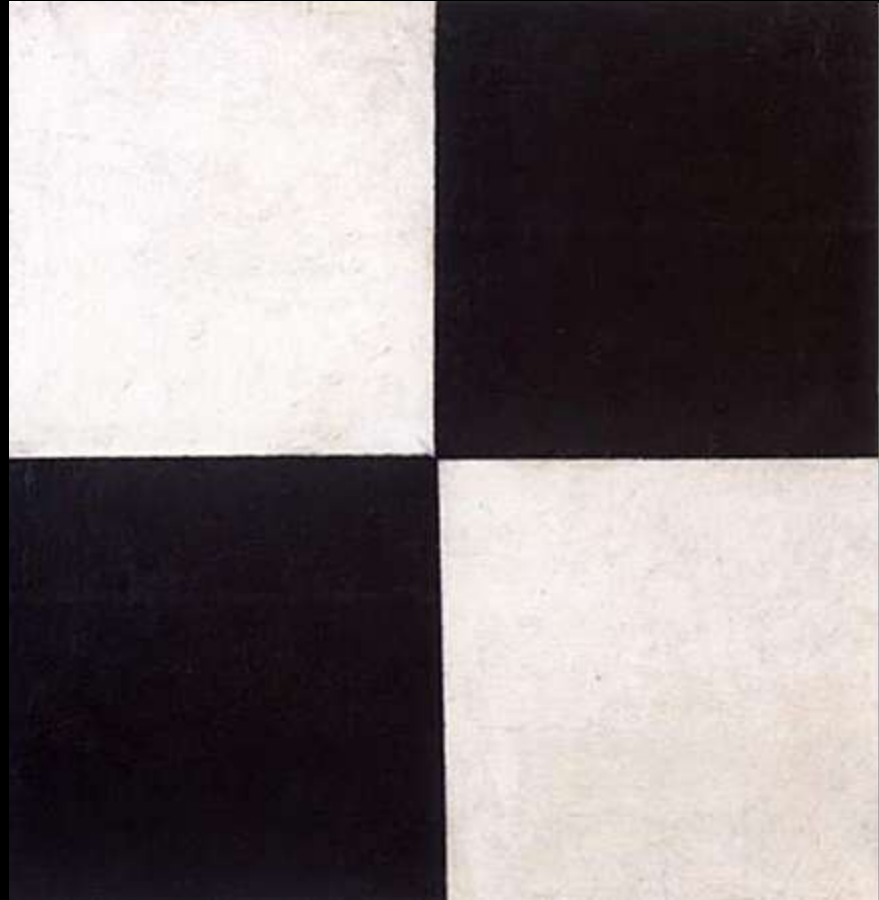


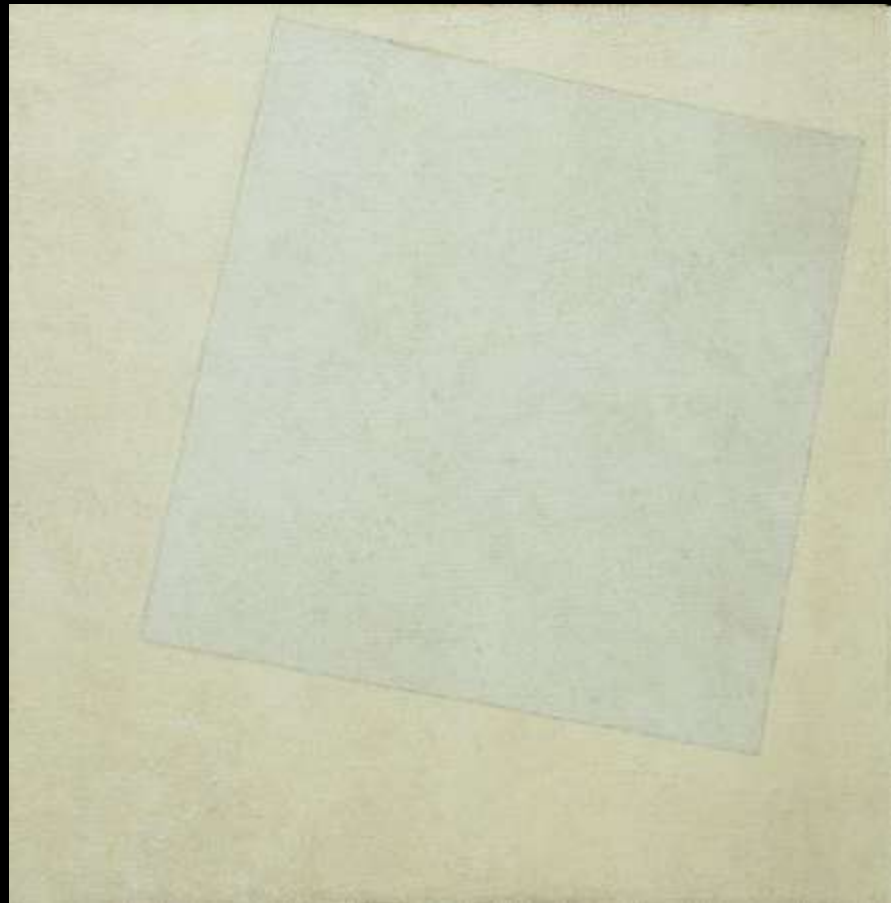
















ПРОЛЕТАРИИ
ВСЕХ
СТРАН
СОЕДИНЯЙТЕСЬ

БЕЗД

КАМИТЕТАВ

ДЕ РЕВЕНКОМ

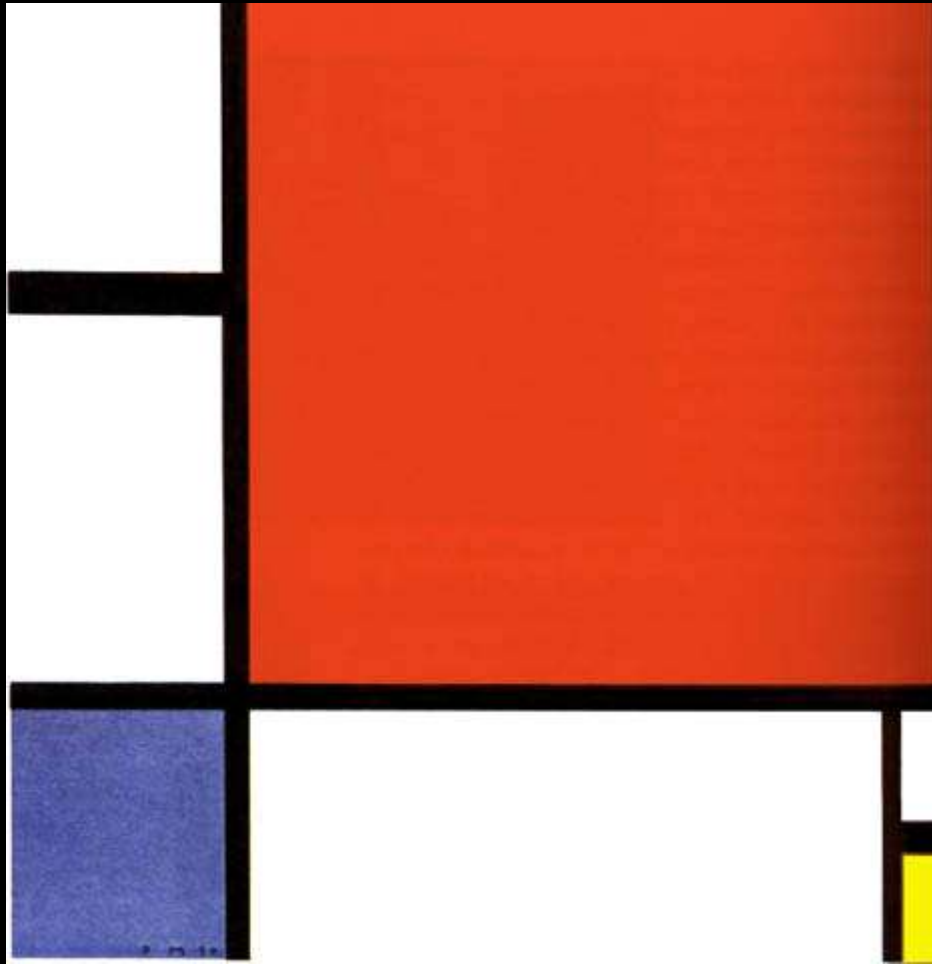
БЕД

НАТН

СТАВ
ДКАГЬ
1918

Μοντριάν

Τα δέντρα





Worth 100th Anniversary



Μοντριάν Πιέτ , *Τοπίο*, π.1905, Λάδι σε ξύλο , 24 x 31 εκ



Μοντριάν Πιέτ , *Μύλος*, 1905 , Λάδι σε ξύλο , 35 x 44 εκ



Piet Mondrian (Netherlands), Woods Near Oele - 1908



Trees by the Gein at Moonrise. / Bomen aan het Gein bij opkomende maan. 1907/08. Oil on canvas. 79 x 92.5 cm.

Gemeentemuseum, the Hague, Netherlands.



Avond (Evening); Red Tree
1908

Oil on canvas
70 x 99 cm (27 1/2 x 39 in H)

aags Gemeentemuseum, The Hague



Gray Tree
1911
Oil on canvas
78.5 x 107.5 cm (30 7/8 x 42 3/8 in)

Haags Gemeentemuseum, The Hague



Mondrian. Tree. 1912. Mondrian.



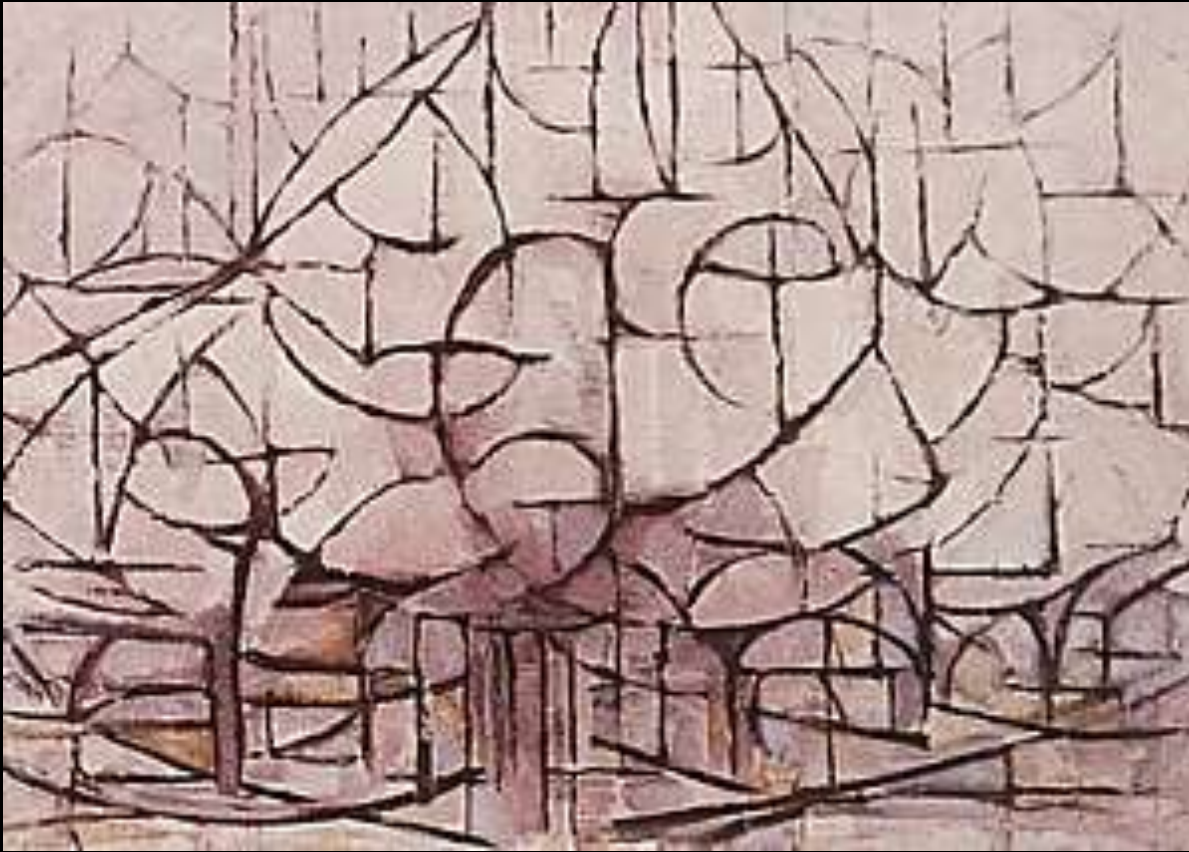
Composition with tree II. 1912.



Trees, c. 1912, oil on canvas, 37 X 27 7/8 inches (94 X 70.8 cm), Carnegie Museum of Art, Pittsburgh, PA



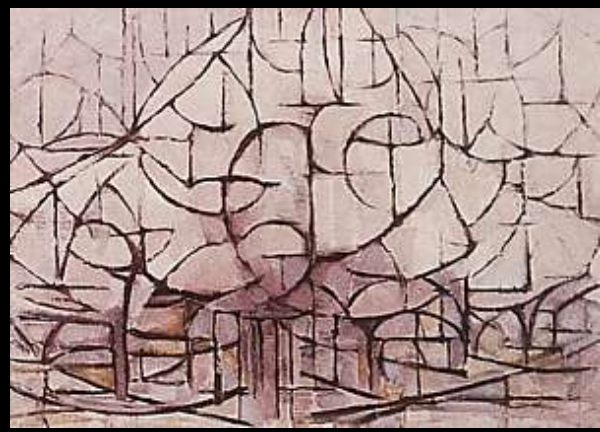
Piet Mondrian Apple Tree in Flower, 1912

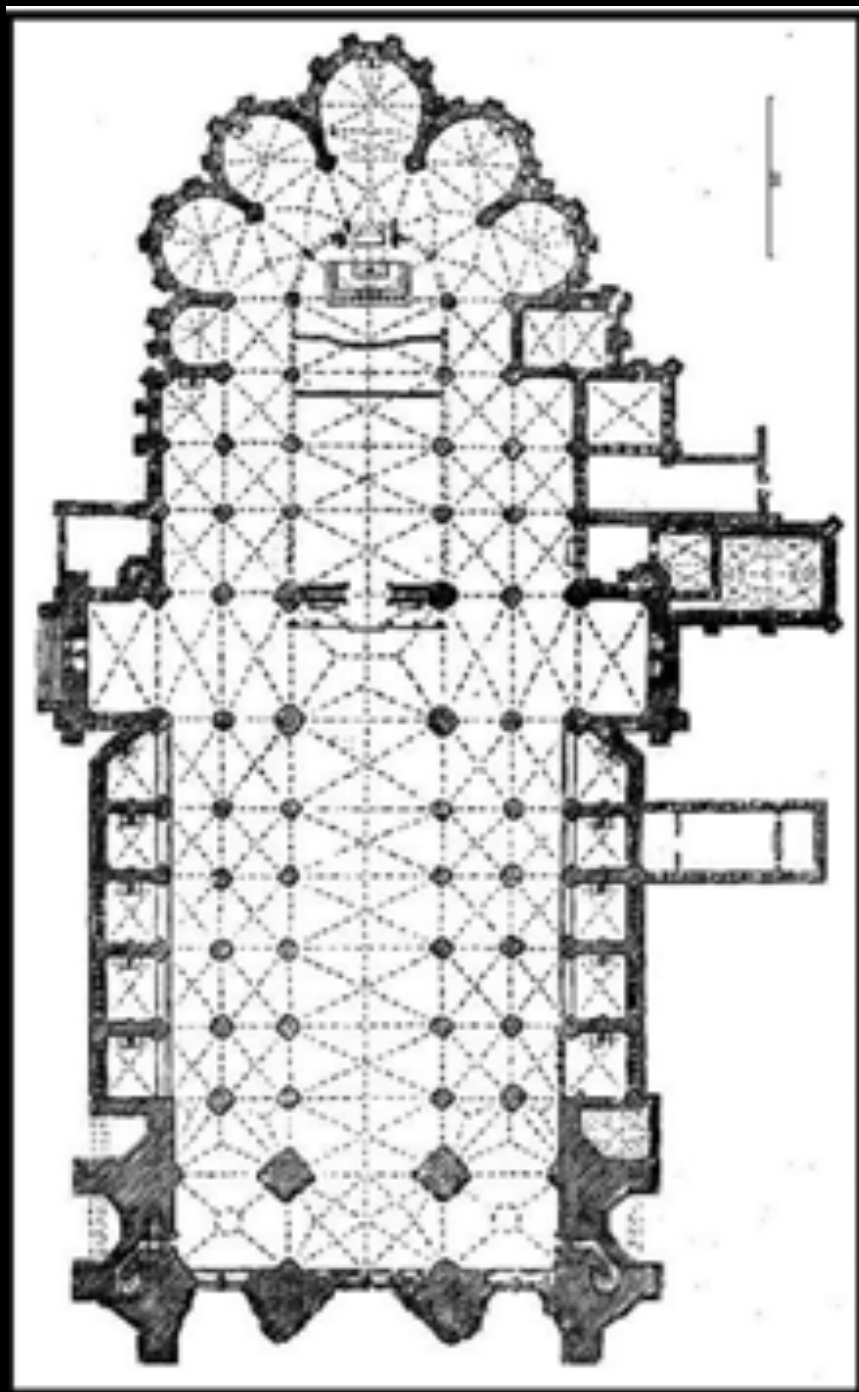


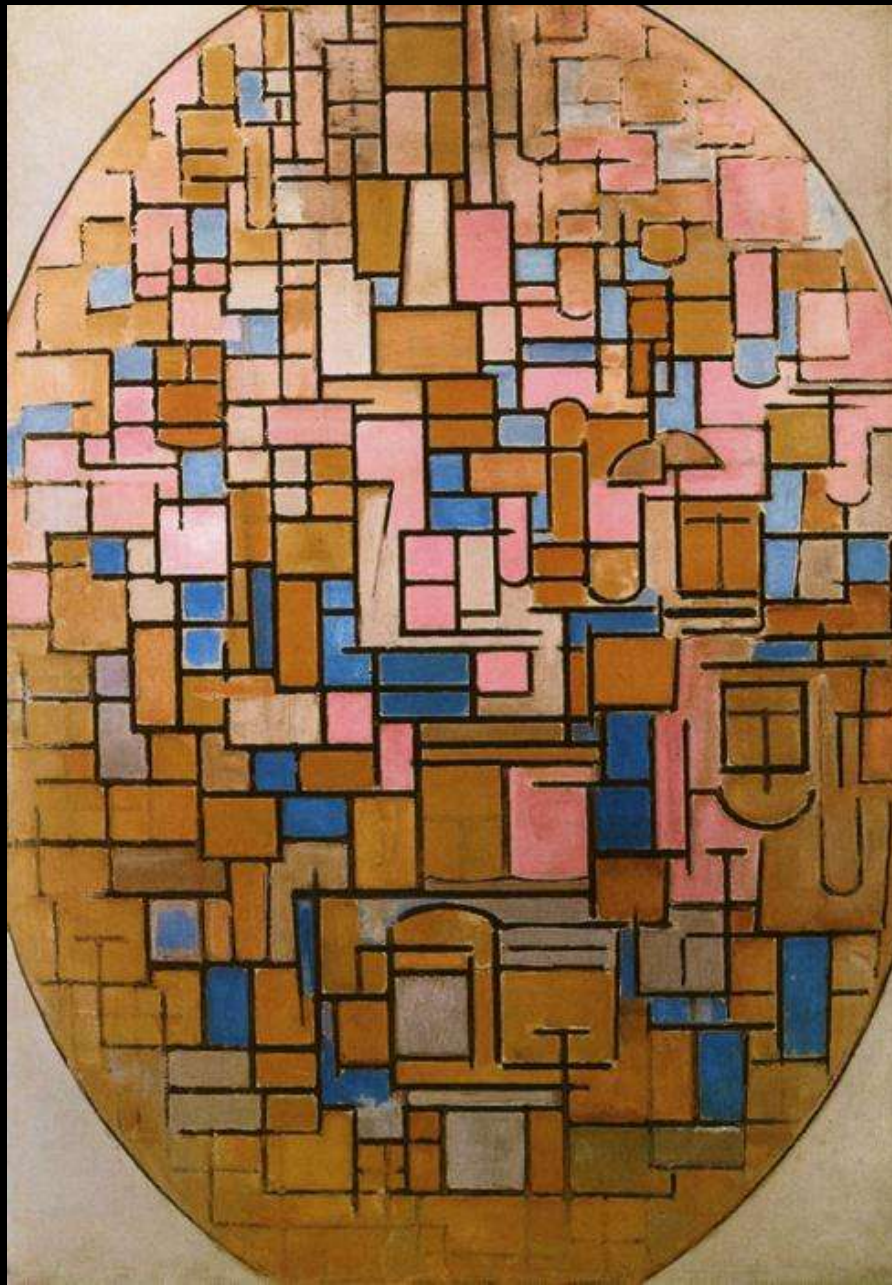
Trees in Blossom, 1912
65 x 75cm [25.5 x 29.5"]



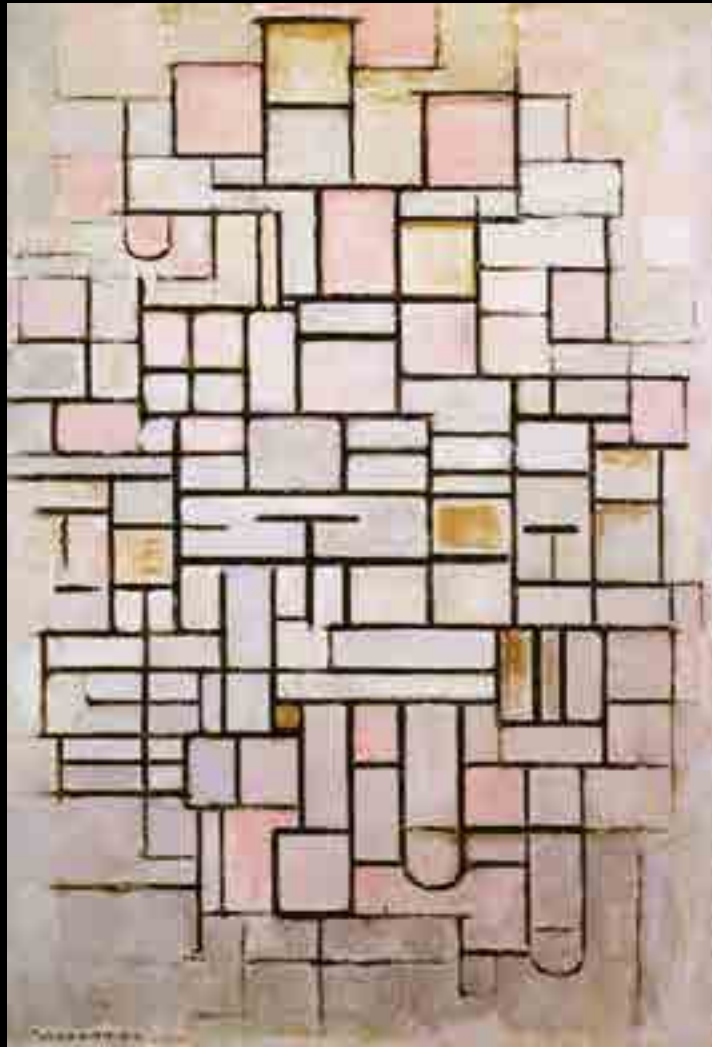
Composition Trees II, 1912
98 x 65cm [38.5 x 25.5"]



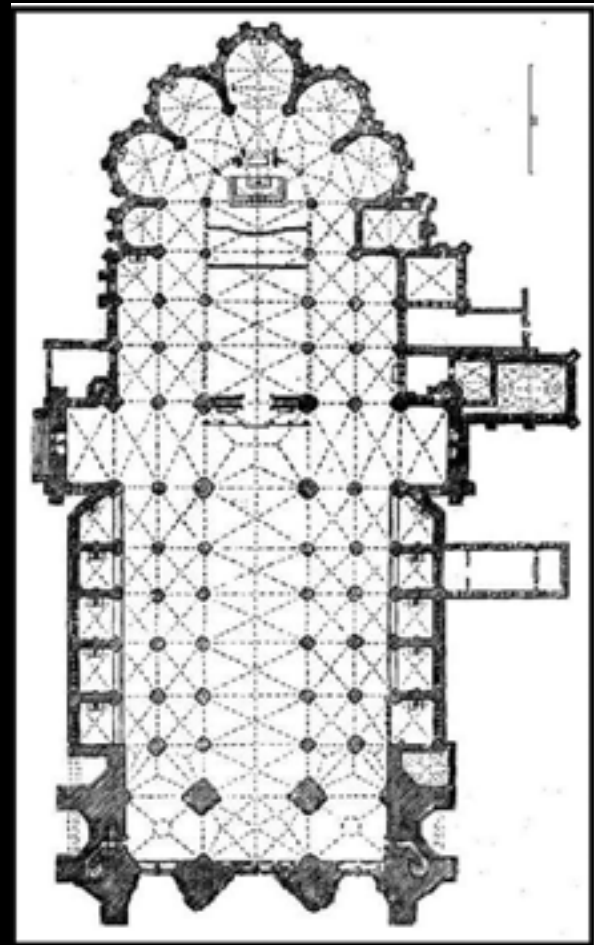


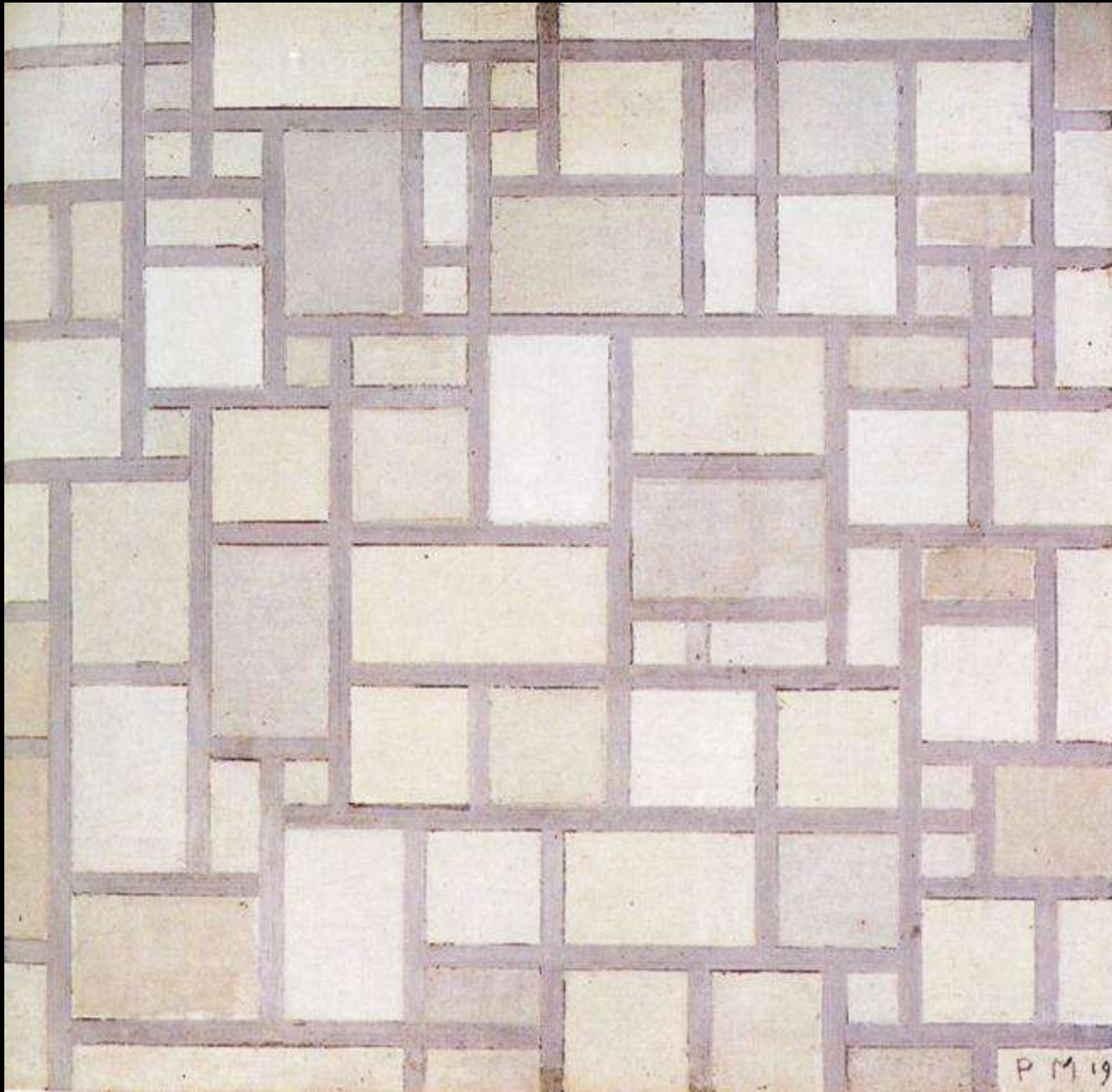


Piet Mondrian. *Tableau III*. Oil on canvas. 140 x 101 cm. Stedelijk Museum, Amsterdam, Netherlands.

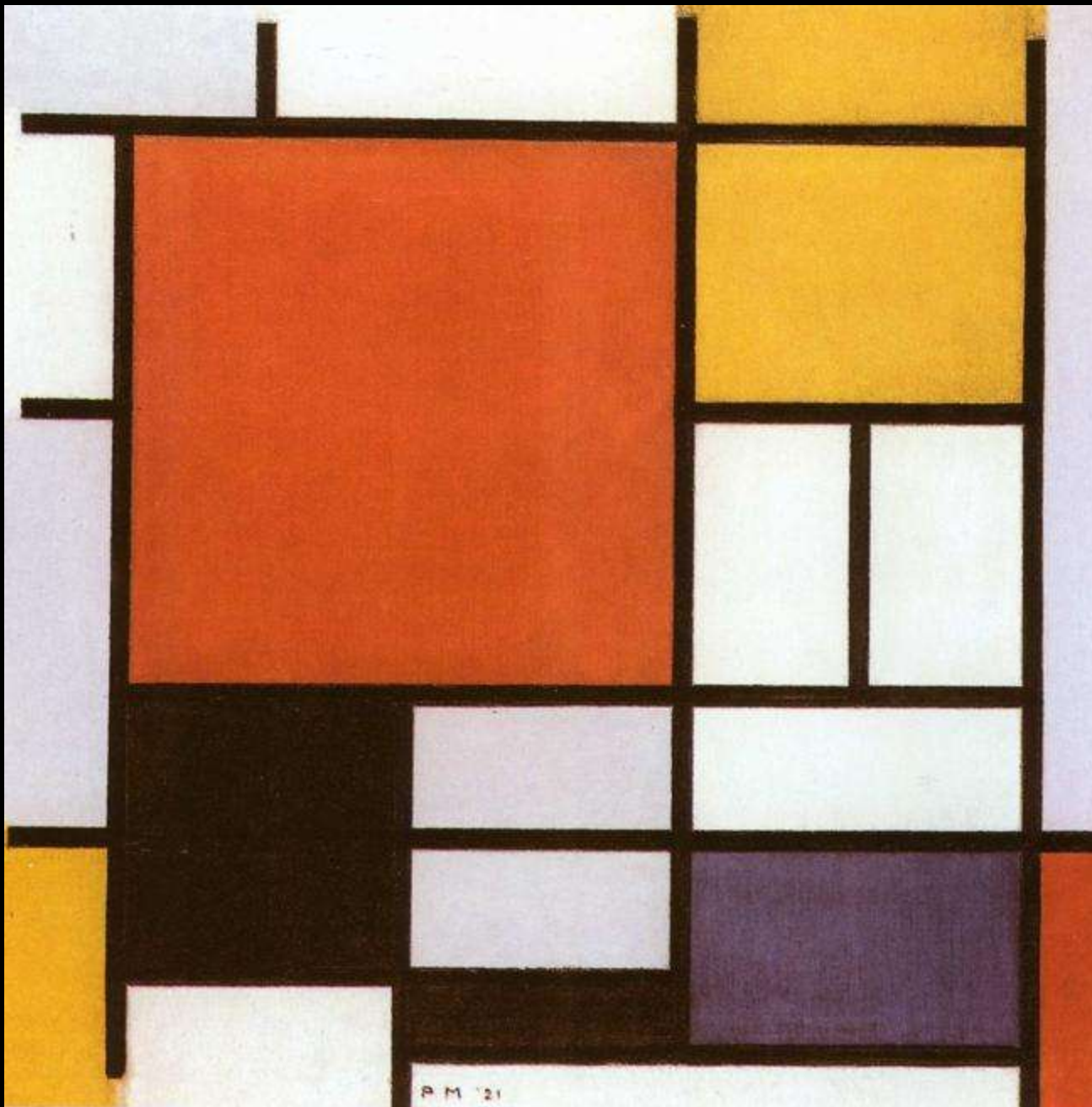


Piet Mondrian. *Composition No.6. / Compositie nr.6.* 1914. Oil on canvas. 88 x 61 cm.

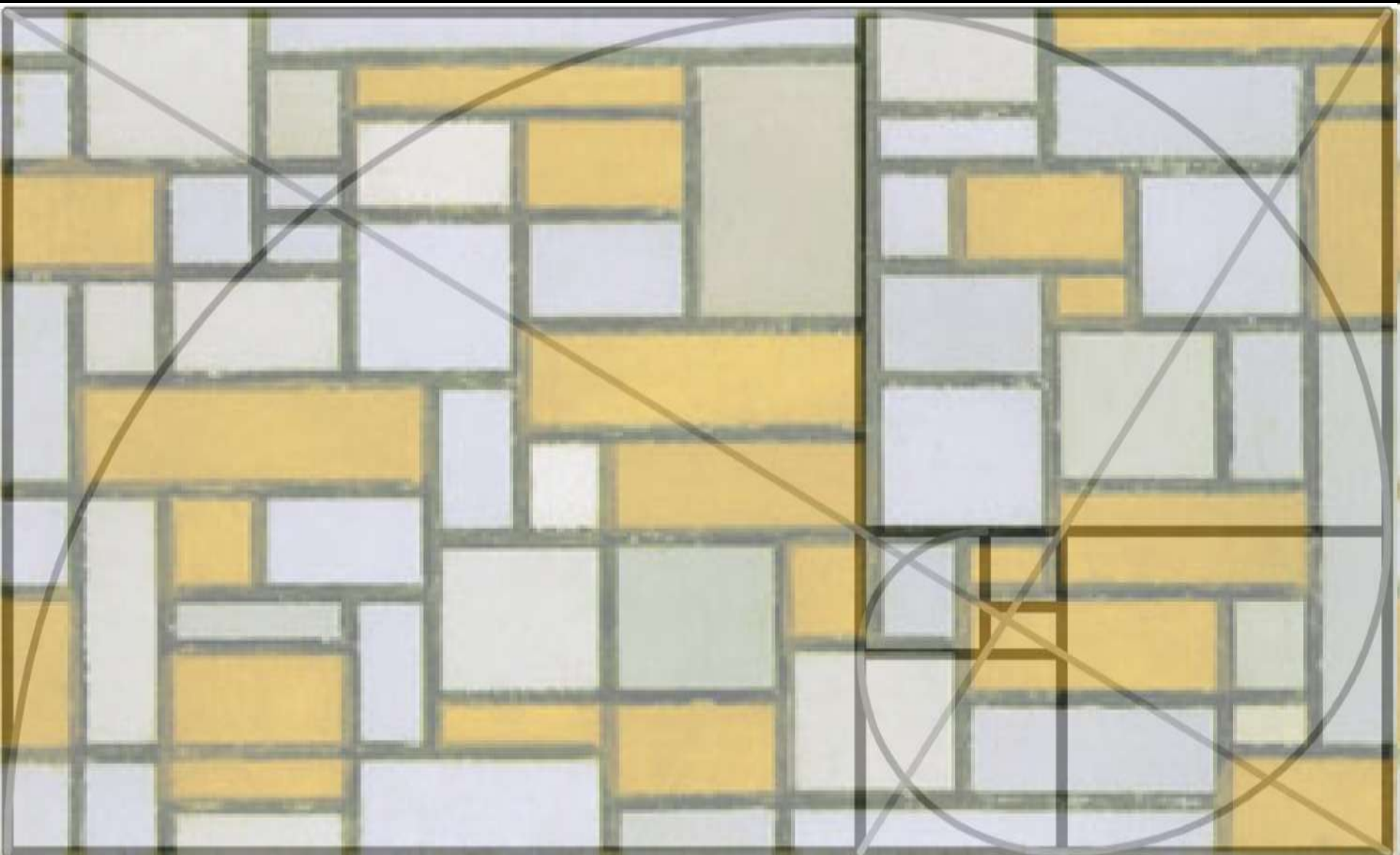


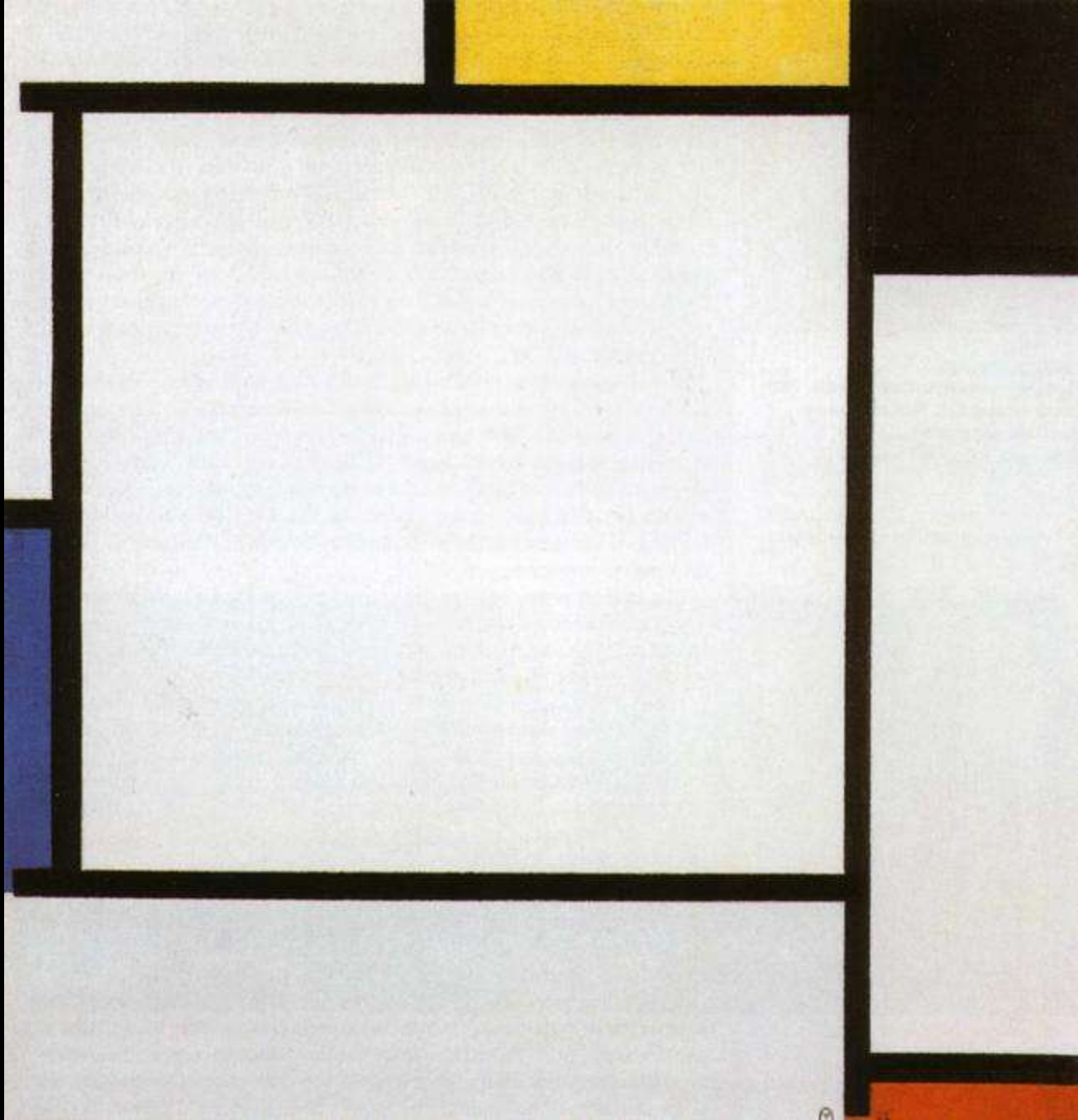


Piet Mondrian. *Composition: Light Color Planes with Grey Contours*. 1919. Oil on canvas. 49 x 49 cm.

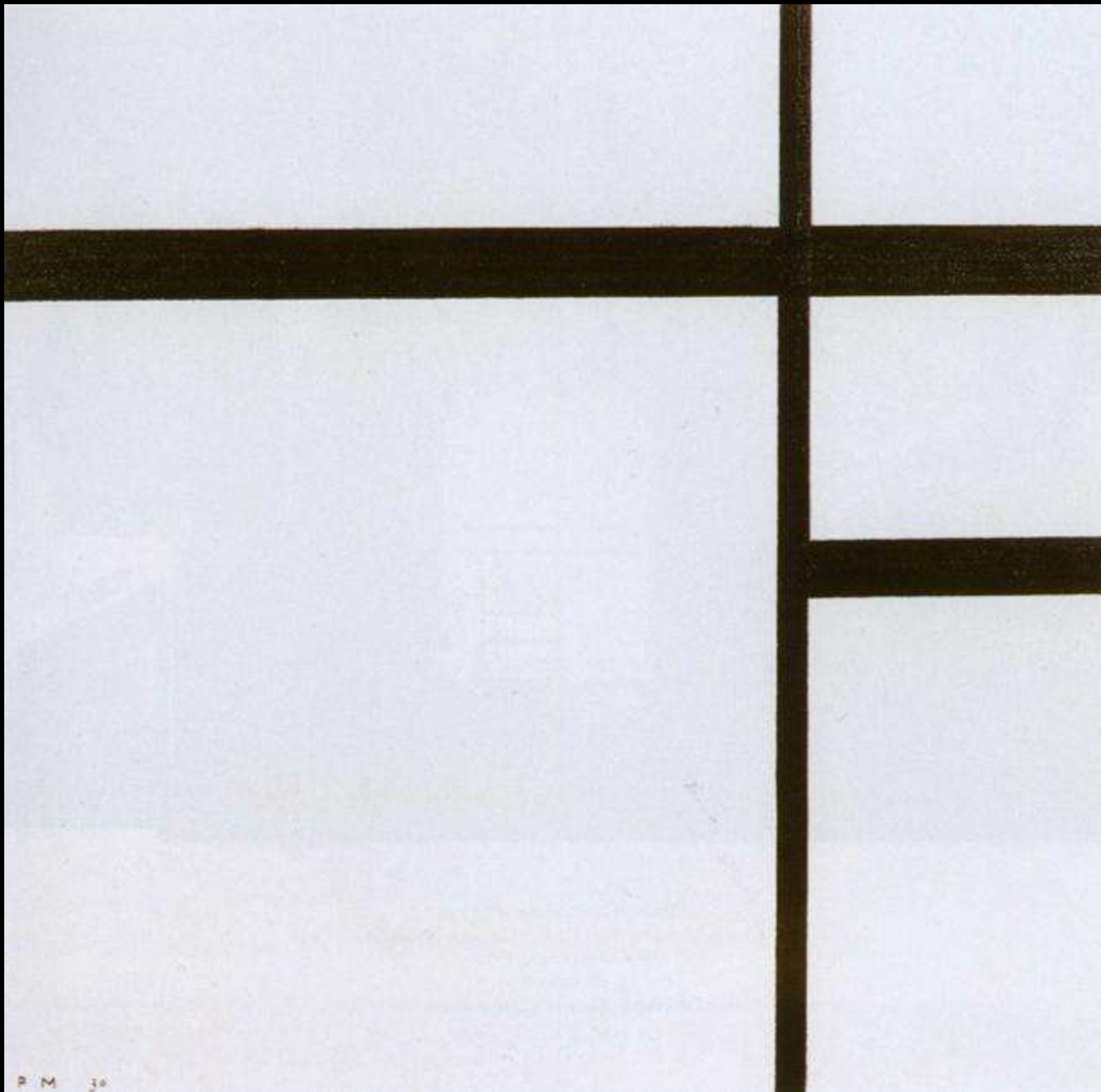


Piet Mondrian. *Composition with Red, Yellow, Blue and Black / Compositie met rood, geel, blauw en swart*. 1921. Oil on canvas. 59.5 x 59.5 cm.

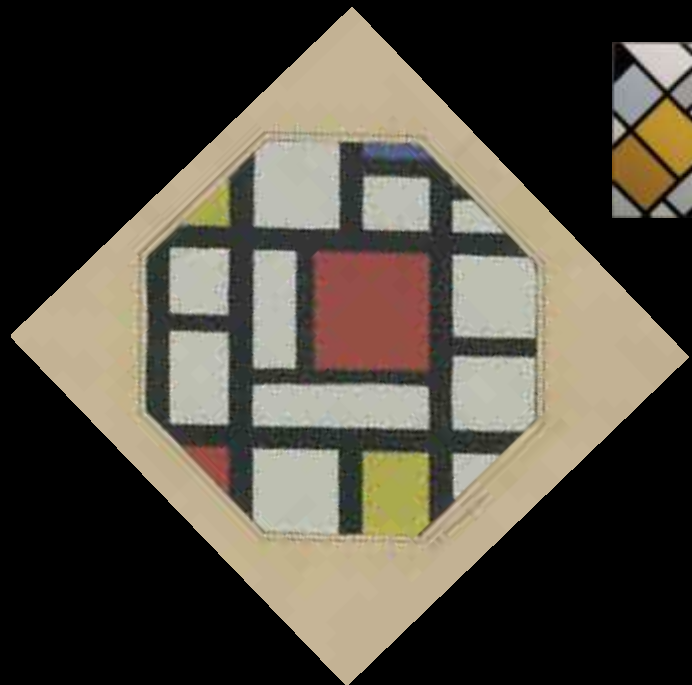
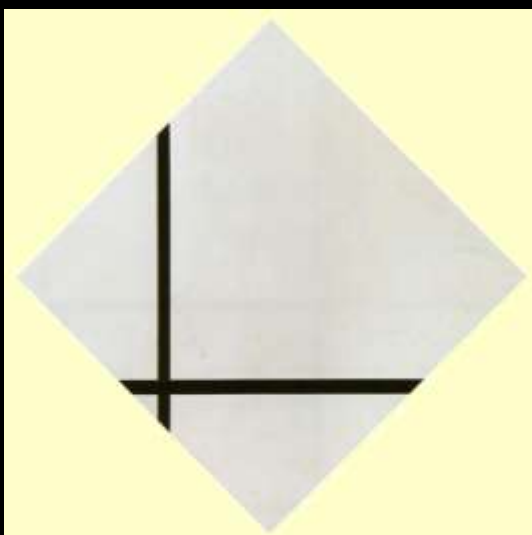
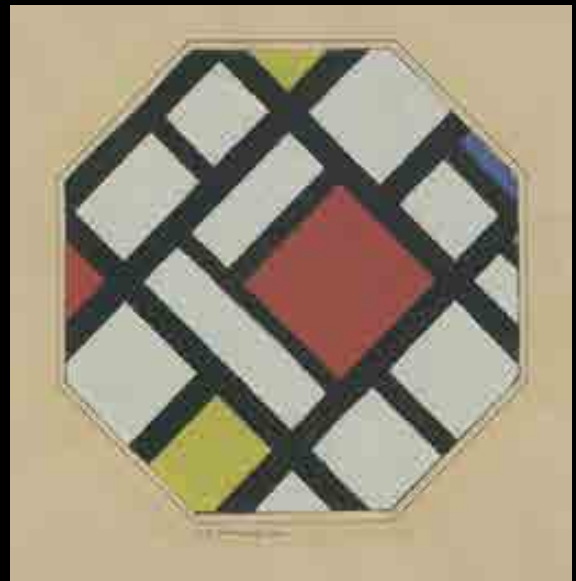
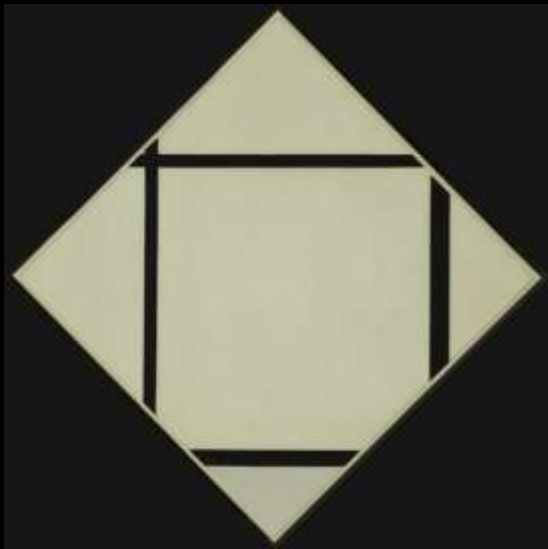




Piet Mondrian. *Composition 2./ Compositie 2.* 1922. Oil on canvas. 55.5 x 53.5 cm.



Piet Mondrian. *Composition II with Black Lines.* / *Compositie nr.2 met zwarte lijnen.* 1930. Oil on canvas. 50 x 51 cm.

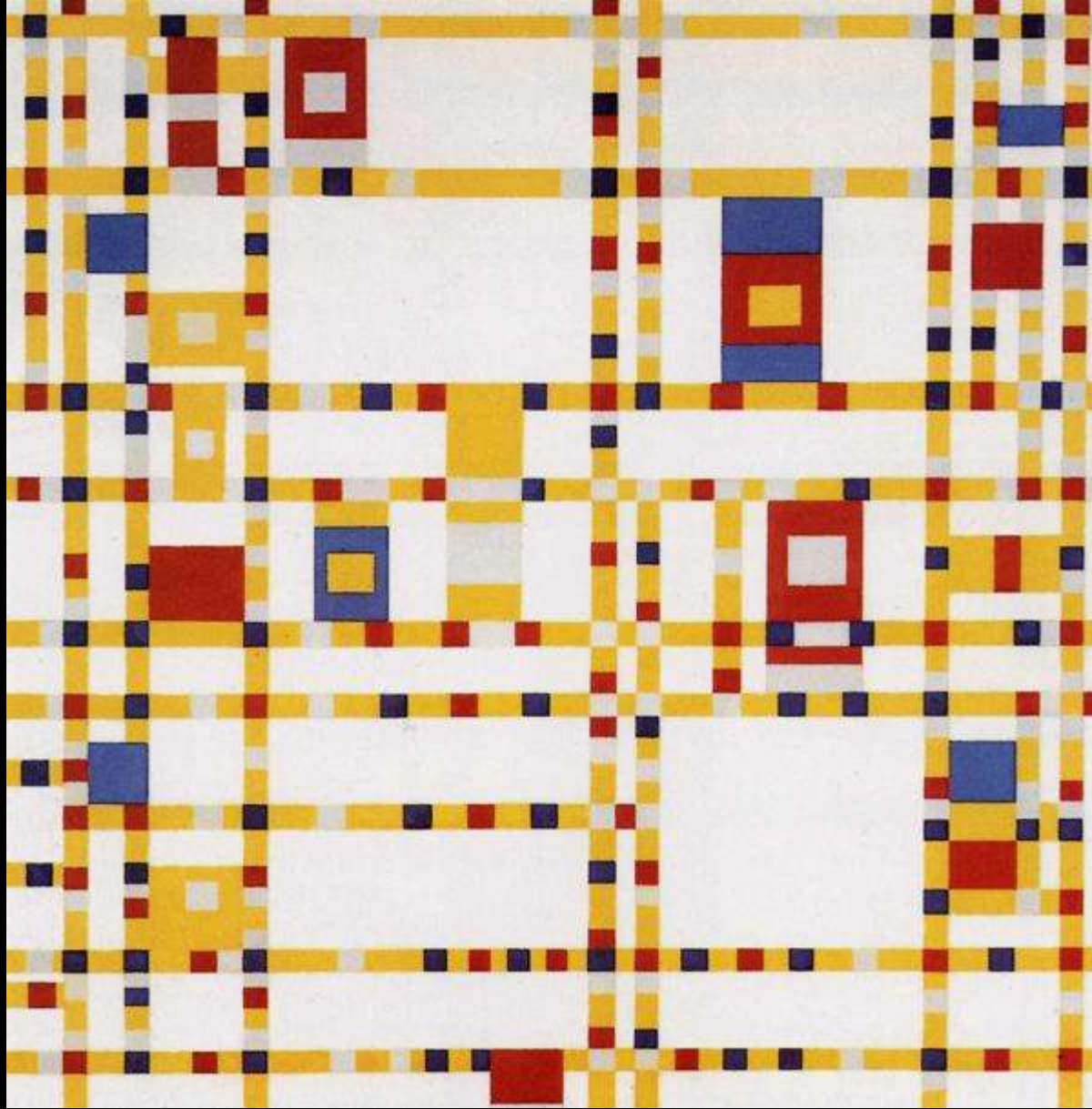




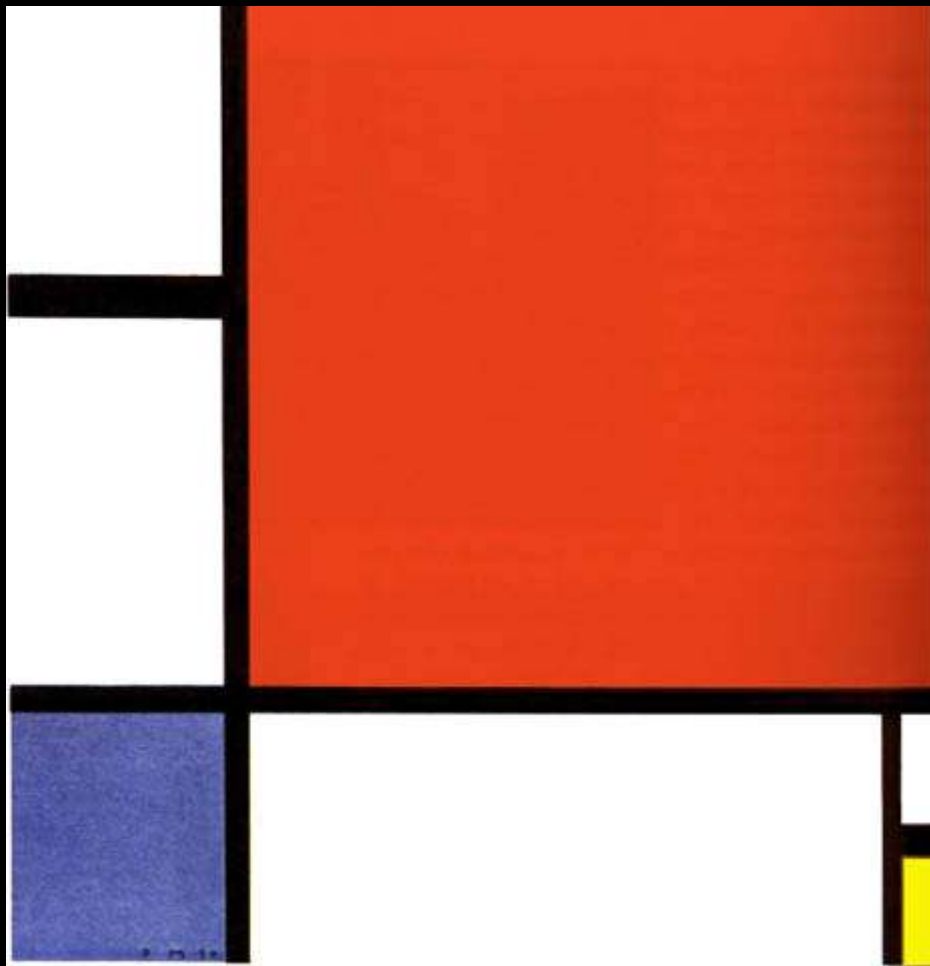




Piet Mondrian. *New York City II*. 1942-44. Oil and paper on canvas. 119 x 115 cm.



Piet Mondrian. *Broadway Boogie-Woogie*. 1942/43. Oil on canvas. 127 x 127 cm.



Composition with Red, Blue, and Yellow
De Stijl
oil on canvas
1930

Μόραλης





Emerico Zafra, *Baths in Jerusalem*, 1955-1962
oil on canvas, 120 x 130
Museum of Modern Art, New York, NY







Entscheidungsstunde I, 1914-1915

Oil on canvas, 120 x 110

Wien (Inventory No. 194-178)









Francis Bacon's portrait of himself, 1961
Oil on canvas, 67 x 101
© Francis Bacon, 1961



Γιώργος Μπουζιάνης





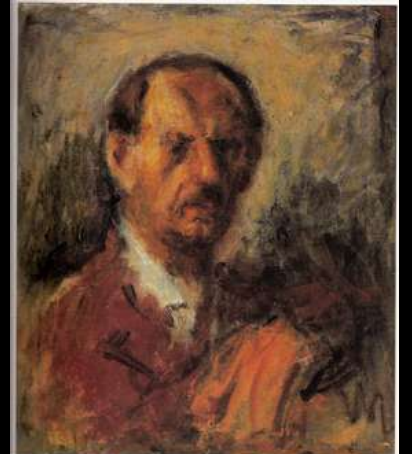
АТТИС (1897-1898)
 1898 г.



АТТИС (1897-1898)
 1898 г.



ИДИС (1897-1898)
 1898 г.



АТТИС (1897-1898)
 1898 г.



Александровский, А. И.
1890 г.



ANTONI GAUDÍ, 1888
1888-1889



ИПРИКЕТОВА, АНАСТАСИЯ, 1917
№ 20



АТТОРПОРТНА, 190-е
190-е гг.





ΓΥΝΑΙΚΕΙΑ ΜΟΡΦΗ, 1940-45
(όψ. πλάτ. 105)



KANCHI MURUGU, 1910
18 x 12





AVDOTYA KARTAL, 1996
(Fig. nos. 107)







KARITHI'YNAIRA, 1959
140x100





TYNARIETA MOPIFI, 1982
(45 cm x 100)



ARSHAKUNI MIPOCI, 1969
146 cm x 200



ANNI-MARIJA MOPPE, 1999
oil on canvas



Franco Bello

G. B. ...
A. ...

... per ...



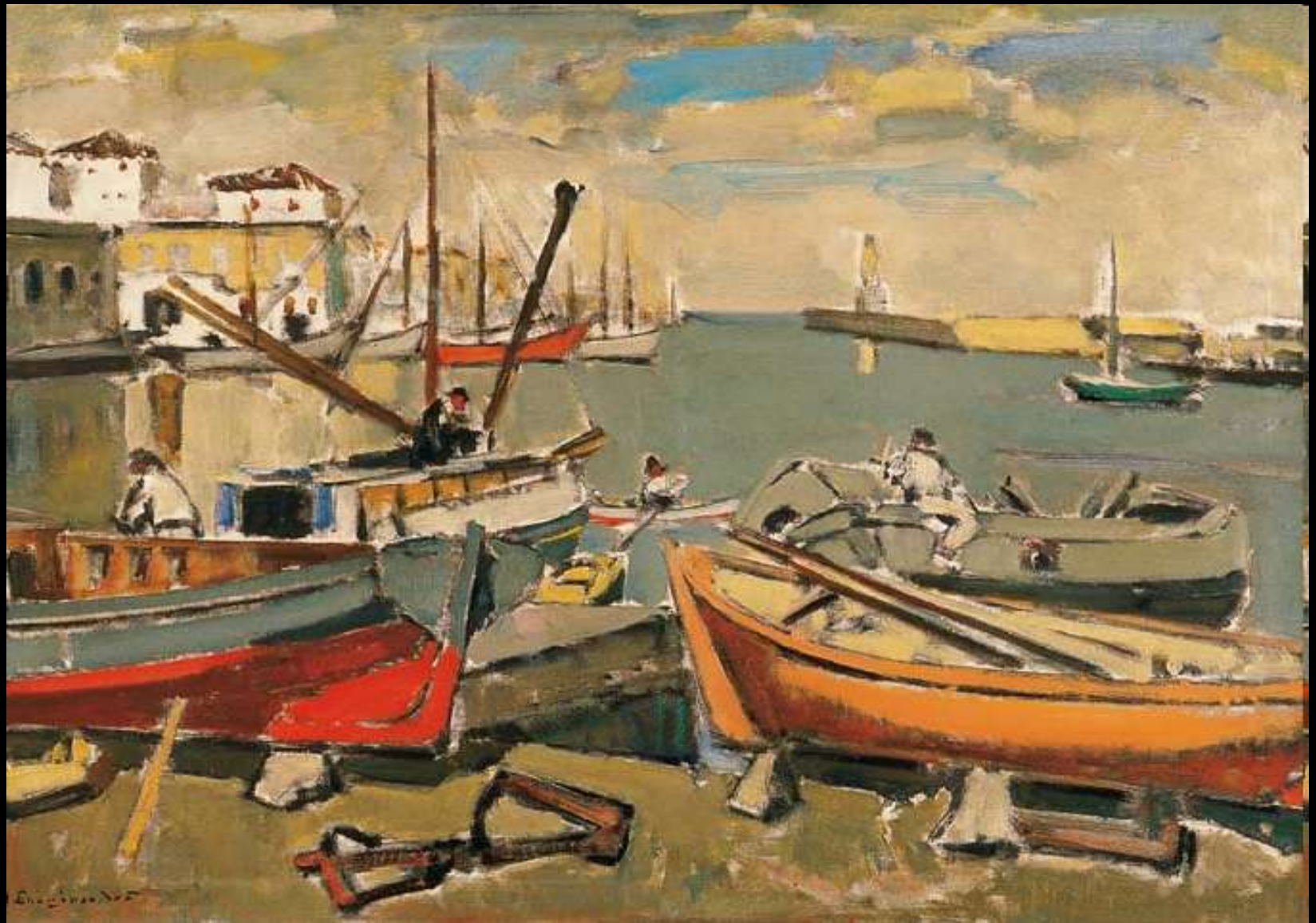




ΠΟΡΤΟΙ
ΜΟΥΖΕΟΝ
— Έργο —
11.6.2017
Υπόμνημα
Εύρωπ
Προσέβα

Σπυρόπουλος













55, Από την Ανόρο II, 1952





278. Εγκαίνιας στη Μόσχα I, 1914

310, Ξερούλιθός στη Μήγιστο VI, 1955











278. Εγκαίνια στη Μόσχα Ι, 1944











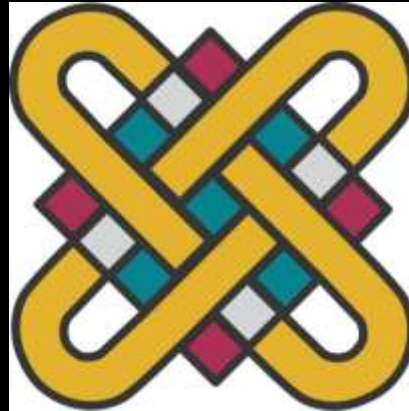






**Η πορεία από την
πραγματικότητα στην
αφαίρεση**

ΠΑΝΕΠΙΣΤΗΜΙΟ ΔΥΤΙΚΗΣ ΜΑΚΕΔΟΝΙΑΣ
ΤΜΗΜΑ ΕΙΚΑΣΤΙΚΩΝ ΚΑΙ
ΕΦΑΡΜΟΣΜΕΝΩΝ ΤΕΧΝΩΝ



1^ο Εργαστήριο Ζωγραφικής

Γιάννης Ζιώγας
Επίκουρος Καθηγητής

ΠΑΝΕΠΙΣΤΗΜΙΟ ΔΥΤΙΚΗΣ ΜΑΚΕΔΟΝΙΑΣ
ΤΜΗΜΑ ΕΙΚΑΣΤΙΚΩΝ ΚΑΙ
ΕΦΑΡΜΟΣΜΕΝΩΝ ΤΕΧΝΩΝ



1^ο Εργαστήριο Ζωγραφικής

Γιάννης Ζιώγας
Επίκουρος Καθηγητής

©Γιάννης Ζιώγας